

Pollinators in New Zealand

Spot pollinators in wild areas, gardens or on farms.

Learning Intentions:

- Appreciate the diversity of New Zealand pollinators.
- Recognise and name them.

Insect pollinators

Common pollinators of plants with flowers that are colourful and/or scented.



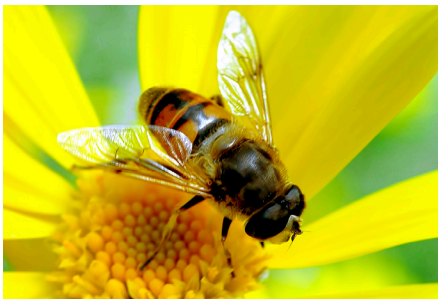
Honey bee



Bumble bee



Striped dung fly



Drone fly



Bristle fly



Rango taumaro (Brown blowfly)



Green soldier fly



Hover fly

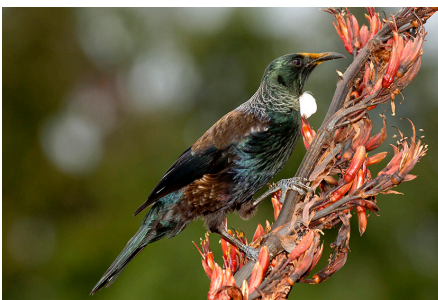


European blowfly

Other insects such as native bees and butterflies also pollinate flowers.

Bird pollinators

Common pollinators of trees, shrubs and plants such as harakeke (New Zealand flax).



Tūi



Kokimako (Bellbird)



Silvereye (Pihipihi)

Other birds such as starlings, sparrows and charfinches occasionally pollinate flowers.