

CAREERS FOR CHANGE

Society, Tourism and Sport



Lincoln University

Te Whare Wānaka o Aoraki

AOTEAROA • NEW ZEALAND

New Zealand's specialist
land-based university



BE PART OF THE GENERATION THAT
WILL MAKE A CHANGE



WWW.LUGENERATION.CO.NZ

OUR MISSION



**The University has a mission to help:
feed the world, protect the future,
and live well.**

It is predicted that by 2050 the world's population will reach 9.2 billion people: this will create challenges that need solutions.

As the population grows, food supply and production will become key. So will sustaining the environment for future generations. As these two, potentially conflicting, concepts become increasingly pressing we will also want to be living well on our planet.

Lincoln University is a uniquely and deliberately specialised university finding solutions for these challenges.

To achieve our mission, Lincoln is positioned to work alongside industry, the community, and people from around the globe. The University's qualifications range from certificate level through to PhD – and our teaching and research covers all activity associated with the land-based sectors to meet the needs of not only New Zealand but also the world.

Lincoln students come from all over New Zealand and from more than 60 countries around the world. Once studies are completed, Lincoln graduates can be found around the globe making a difference.



**Lincoln
University**

Te Whare Wānaka o Aoraki

AOTEAROA • NEW ZEALAND

New Zealand's specialist land-based university

KIA ORA AND WELCOME



Whether you're looking at doing tertiary study for the first time, or adding to your educational achievements, you know the importance of selecting the right course of study and the right tertiary institution to carry out that study – the first step towards a future filled with opportunities.

Focusing on what you enjoy as well as your strengths is a good place to start to make the right decision for you. Think about what really interests you and why it interests you. What do you like about certain activities or environments? What skills do you already have or want to learn and use? What job would suit your personality? Are there a number of courses which match your preferences and skill set?

Once you've thought about what you might like to do, talking with friends and family who know you well is a good way to get perspective and narrow down the choices. Follow up by talking to a career advisor who can give you more information about various qualifications and how to achieve your career goals. Talking to people who have studied the subject you are interested in, or who are working in the field or job you are thinking about, can be really helpful and give you a realistic picture of what it will be like. It makes sense to decide what sort of job and lifestyle you want first, then work out what programme of study is best suited to make you employable in your chosen field.

Lincoln University offers a diverse range of programmes which prepares students for the demands of today's world. Course theory is underpinned by a practical focus which gives students valuable real world skills and experience. Our graduates move into the workplace with the knowledge and proficiency to be successful in a huge variety of careers all over New Zealand and the world



Lincoln campuses

Lincoln University has two South Island campuses: **Te Waihora** in Lincoln, Canterbury and **Telford** in Balclutha, Otago.

» Te Waihora campus (Lincoln, Canterbury)

Situated on 58 hectares of green space, the University offers modern teaching on this beautiful, established campus. Facilities include a comprehensive library, IT labs, free car parking, large dining hall and function centre, café and bar, a printery, a travel agency, banking services and excellent sporting facilities.

With a student population of 3500, from over 60 different countries, Lincoln University is an easy place to make friends. On-campus accommodation is home to around 600 students during the University year, including catered halls of residence, self-catered residential halls and student housing. For those living off-campus, there are regular bus services to and from central Christchurch.

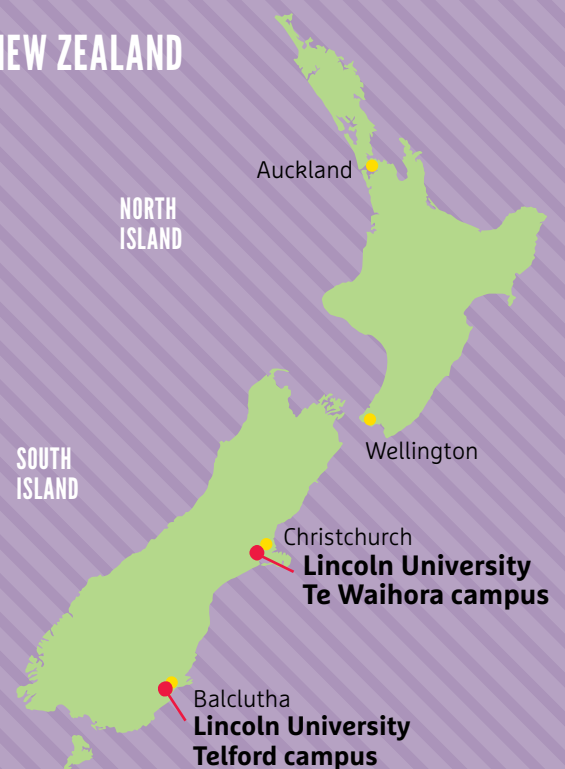
Find out more: www.lincoln.ac.nz

» Telford campus (Balclutha, Otago)

The Telford campus is our smaller campus and one of New Zealand's largest land-based vocational training providers. Located near Balclutha in South Otago, it is based on a 921-hectare commercial farm, offering real farming experience for live-in students. Telford offers practical training in agriculture, rural vet technician practices, dairying, stock and station, equine studies, forestry, horticulture, and apiculture (beekeeping).

Find out more: www.telford.ac.nz

NEW ZEALAND



Why study society, tourism or sport?

RANKED #13
SMALL UNIVERSITY
IN THE WORLD
BY QS RANKINGS 2015



If you are interested in people and communities, Lincoln University's qualifications are a great choice. Our people and society qualifications address the key issues of 'protecting the future' and 'living well'. The disciplines of sport and recreation management, tourism management, land and property management, and Māori and indigenous studies play major roles in the wellbeing of New Zealand's economy and its people.

Tourism contributes to 15% of the country's total export earnings. Designed in consultation with industry, our tourism programme gives students a broad comprehension of the sector at all levels, while also providing management training. This is a skill fast becoming a prerequisite for a career in tourism.

The market value of sport and recreation to the New Zealand economy is estimated to be more than \$5 billion, with gains in productivity and health benefits valued at over \$1 billion. Our sport and recreation programmes cover sport and society courses, event management, sport and recreation management, and issues associated with offering professional sport and recreation services to communities.

Studying property at Lincoln University will provide you with the ability to make decisions in both the urban and rural property fields, that benefit businesses, consumers, society and the environment. You will gain a wide range of practical skills, giving you an edge over your competitors when applying for a job in the industry.

Our Māori and indigenous studies programmes involve appreciating that Māori and other indigenous communities have a unique association with the environment, which affords them specific knowledge and a cultural framework for engaging with the natural world.

Our programmes provide students with the knowledge and skills to work competently with communities and advocate across many environmental and related social, political and economic issues.

When you study society, people and sport related courses at Lincoln University, you will learn from some of the best researchers and lecturers in their respective fields and access the most up-to-date industry knowledge. We work closely with industry to ensure you are equipped for a broad range of career opportunities.

This book explores undergraduate options in the fields of society, tourism and sport, and some of the pathways that our graduates have taken to get them where they are today. It is designed to show you pathways and opportunities you can take, and assist you in making the right choice for your future. To see the full range of qualifications on offer, visit: www.lincoln.ac.nz

What are your choices?

Depending on interests, time, and current qualifications, you can choose from the University's undergraduate degree programmes through to postgraduate level courses.



Programmes on offer for society, tourism and sport studies:

Business Studies			B				
Environmental Management			B	H	PG	M	PhD
Land and Society			B				
Māori and Indigenous Business			B				
Land and Property Management			B				
Sport and Recreation			B	H			
Tourism Management			B	H		M	

Note: Qualifications change from time to time, if you don't see the programme you are interested in please contact Student Liaison on 0800 10 60 10.

C Certificates

These are excellent entry qualifications for people who would like comprehensive introductory information, don't have University Entrance, or who are coming back to University and would like to prepare for further study.

D Diplomas

These are one-year programmes that focus on particular areas of interest.

B Bachelors' degrees

In most cases, the bachelor's degree allows you to follow the path you want, mixing optional subjects with papers that are core requirements.

Undergraduate qualifications usually commence in semester one (February), but it is often possible to start in semester two (July) depending on the qualification selected.

Lincoln University also offers a wide range of single or multi-disciplinary further study or research opportunities for those looking for highly respected postgraduate qualifications. Please view the Postgraduate prospectus or visit: www.lincoln.ac.nz

H Honours degrees

These offer the opportunity for those with high academic results to complete a fourth year of study on completion of their bachelor's degree.

PG Postgraduate and graduate certificates and diplomas

These allow you to transfer from another area of study to gain skills in an area of interest, or build on the bachelor's degree or equivalent already gained.

M Masters' degrees

These enable you to develop a thesis in a chosen area or undertake taught qualifications. They are the highest pre-doctorate qualification.

PhD Doctor of Philosophy (PhD)

These are available in most of the disciplines in which the University offers postgraduate studies. This is a further three years' study and a thesis on top of a Master's or Honours degree.


Best preparation for society, tourism and sport studies

If you are still at school, we highly recommend you take subjects that are relevant to your chosen course of study to make the most of your time studying at Lincoln University.

The table below shows you the subjects you should consider at school if you are thinking of pursuing the qualifications listed. It is also a good way of finding out what you might want to study if you are interested in particular school subjects.

	ACCOUNTING	AGRICULTURE/ HORTICULTURE	ART/HISTORY/ CLASSICS	BIOLOGY	CHEMISTRY	COMPUTING	ECONOMICS	ENGLISH	GEOGRAPHY/ SOCIAL STUDIES	GRAPHICS/ DESIGN	MĀORI/TE REO	MATHS/ STATISTICS	P.E./OUTDOOR ED	PHYSICS	TOURISM
BCOM – MĀORI AND INDIGENOUS BUSINESS STUDIES							Recommended	Recommended			Useful	Recommended			
BES – LAND AND SOCIETY								Recommended	Recommended			Recommended			
BES – MĀORI AND INDIGENOUS ENVIRONMENTAL MANAGEMENT								Useful	Useful		Recommended	Useful			
BACHELOR OF LAND AND PROPERTY MANAGEMENT							Recommended	Recommended	Recommended			Recommended			
BSc – MĀORI AND INDIGENOUS KNOWLEDGE OF THE ENVIRONMENT				Recommended	Recommended	Recommended		Useful	Useful		Useful	Recommended		Recommended	
BACHELOR OF SPORT AND RECREATION MANAGEMENT			Recommended	Useful		Recommended	Recommended	Useful	Recommended			Recommended	Recommended		Recommended
BACHELOR OF TOURISM MANAGEMENT						Recommended		Useful	Useful			Recommended			Recommended

 Recommended subjects.

 Useful subjects.

Lincoln University and Climate Change



The University's commitment to sustainability and climate change issues is apparent in our teaching and research, from cutting edge research around climate change, asking questions about adaptation and evolution in changing environments and a changing climate, to mitigating the impact of agriculture on the planet.

So if the global challenges of how to feed the world, protect the future and live well mean something to you, or climate change is on your radar, then you have found the university for you.

The details

Here is just a quick snapshot of our world-leading climate change research and educational initiatives, from detailed scientific studies on the mitigation of greenhouse gas emissions to alternative fuels and climate-resilient tourism.

1. Lincoln University is a partner in the NZ Agricultural Greenhouse Gas Research Centre (NZAGRC), a partnership between leading New Zealand research providers working in the agricultural greenhouse gas area. <http://www.nzagrc.org.nz/nitrous-oxide.html>
2. Lincoln University hosts the National Centre for Nitrous Oxide Measurement, part of the NZAGRC. The Centre can process more than 1000 nitrous oxide samples a day, making it one of the best specialist facilities of its type in the world.
3. Lincoln University contributes to the Global Research Alliance on Agricultural Greenhouse Gases which has 46 member countries. The Alliance focuses on research, development and extension of technologies and practices to grow more food (and more climate-resilient food systems) without growing greenhouse gas emissions. <http://globalresearchalliance.org/about/>
4. Lincoln University is involved in reducing greenhouse gas emissions on the farm by exploring the possibility of renewable fuel. The latest excitement is over Japanese grass *Miscanthus x giganteus*. <http://bioprotection.org.nz/news/can-farmers-help-address-climate-change>
5. Climate change has the potential to both increase New Zealand's attractiveness to tourists and undermine some of its core attractions. Lincoln University is involved in research projects around protecting and growing the tourism industry and developing adaptation strategies.
6. Lincoln University has established a nationwide Global Challenges Programme and Scholarships in response to challenges facing the planet today, including climate change, food production and security, depleting resources, urban sprawl, the loss of biodiversity, and pollution.
7. Lincoln University's academic staff are actively involved in teaching, researching and publication around climate change issues, as well as being involved on committees and boards dedicated to exploring climate change.
8. Lincoln University co-hosts the Waterways Centre (with the University of Canterbury) dedicated to improving New Zealand's waterways. Lincoln University undertakes extensive research on Banks Peninsula and elsewhere with respect to species conservation, and we host New Zealand's only Bio-Protection Research Centre.

To find out more, please talk to us.





Our programmes

10 Bachelor of Commerce
Māori and Indigenous
Business Studies

**12 Bachelor of
Environment and
Society**

Land and Society
Māori and Indigenous
Environmental
Management

**16 Bachelor of Land and
Property Management**

20 Bachelor of Science
Māori and Indigenous
Knowledge of the
Environment

**24 Bachelor of Sport and
Recreation Management**

**26 Bachelor of Tourism
Management**

Lincoln University's bachelor degrees include three LINC courses. These are common to all the degrees and give students a broad global understanding of issues impacting the future of the planet, as well as core learning skills necessary for University study.

LINC 101

Land, People and Economies

An introduction to the many perspectives involved in the use, management and stewardship of land, underpinned by the consideration of land as a resource, and the conflicts and tensions over land use and ownership. A range of topical issues are studied.

LINC 102

Research and Analytical Skills

An introduction to research, its role and function in the production and communication of knowledge. An introduction to critical thinking and the tools and techniques used in evidence-based decision-making and mathematics, statistics, and computing skills.

LINC 201

Sustainable Futures

An advanced discussion on sustainability issues in a global framework. This interdisciplinary course focuses on global sustainability with reference to social, environmental, cultural and economic aspects of sustainability.

BACHELOR OF Commerce

www.lincoln.ac.nz/BCom



DURATION:

3

Years

TAUGHT AT:



Te Waihora campus
(Lincoln, Canterbury)

INTAKE:

Semester Semester

1

2



Lincoln University's Bachelor of Commerce (BCom) degree has a specific focus on value chains. Value chains connect the world, and so do our graduates.

When businesses link their strategies and operations with what is happening in the global economy and with their commercial partners, they are well positioned to capture competitive advantages. As economies have become more interconnected and businesses have become more dependent on international markets for raw materials and end consumers, there is an increasing need for people who understand the global nature of value chains – and Lincoln's BCom majors will give you the tools to be one of them.

The BCom has seven majors: Accounting and Finance, Food and Resource Economics, Individual, Information Technology, Māori and Indigenous Business Studies, Marketing, Supply Chain Management and Global Business.

Entry requirements:

- University Entrance through NCEA, or an approved equivalent qualification.
- If English is not your first language other entry requirements will apply.

Refer to www.lincoln.ac.nz for more information.

Recommended preparation:

For all Bachelor of Commerce programmes a broad range of subjects at NCEA level is ideal.

Programme structure:

- Pass at least 360 credits (24 courses)
- Pass all compulsory courses
- Complete no more than 165 credits (11 courses) at 100-level
- Pass at least 75 credits (5 courses) at 300-level
- Meet the requirements of at least one of the named Bachelor of Commerce majors.



Māori and Indigenous Business Studies major

The Māori and Indigenous Business Studies major recognises Māori assets are key economic resources (for Māori as individuals, whanau, hapu and iwi) that contribute to a diverse New Zealand economy.

The major builds on the core courses within the BCom and investigates the unique associations Māori and indigenous communities have with their traditional territories, places, environments and resources. These associations bring with them a store of knowledge, cultural frameworks, imperatives, concepts and approaches that underpin their management and development. These same communities are now tasked with applying these across a range of modern settings and increasingly diverse business and development contexts. Courses in this major revolve around key themes such as how to best manage and develop collectively owned assets, reconciliation of economic growth with social and cultural imperatives, appropriate governance and management systems nuanced to culture, intergenerational business planning and maintenance and enhancement of environmental quality.

Career outcomes

Employment pathways leading to a managerial level in any business governed by Māori (or other indigenous people), or employment in any business where an understanding and appreciation of social and cultural imperatives of Māori (and indigenous communities as appropriate) is fundamental to the successful operation of that business.

>> PROGRAMME CONTACTS



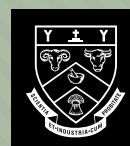
MĀORI AND INDIGENOUS BUSINESS STUDIES

Murray Clark

Senior Lecturer

E: murray.clark@lincoln.ac.nz

P: 03 423 0247



STUDENT LIAISON TEAM

E: land@lincoln.ac.nz

P: 0800 10 60 10

03 423 0000

BACHELOR OF Environment and Society

www.lincoln.ac.nz/BES



DURATION:

3

Years

TAUGHT AT:



Te Waihora campus
(Lincoln, Canterbury)

INTAKE:

Semester Semester

1

2



Lincoln's Bachelor of Environment and Society (BES) prepares students to tackle the big issues around how we live on this planet. The world is changing. Resources are dwindling and the population is growing. This creates increasing pressure on food security, fresh water, ecosystems and indigenous culture. How do we increase productivity in the land-based industries while reducing negative impacts on the environment?

Our graduates will gain a broad skill-set to tackle today's sustainability and land-use issues. Through your specialist major, you will be able to critically analyse and work towards solving global issues – the issues that really matter as our world changes.

The BES has four majors: GIS and Environmental Informatics, Land and Society, Māori and Indigenous Environmental Management, and Water Management.

Entry requirements:

- University Entrance through NCEA, or an approved equivalent qualification.
- If English is not your first language other entry requirements will apply.

Refer to www.lincoln.ac.nz for more information.

Recommended preparation:

Land and Society: Social Studies, Mathematics and English would be useful.

Māori and Indigenous Environmental Management: Māori Studies, Te Reo and Environmental Studies would be useful.

Programme structure:

- Pass at least 360 credits (24 courses)
- Pass all compulsory courses
- Complete no more than 165 credits (11 courses) at 100-level
- Complete at least 75 credits (5 courses) at 300-level
- Meet the requirements of at least one of the named Bachelor of Environment and Society majors.



Majors:

Land and Society

The Land and Society major covers social, environmental, individual and cultural issues relating to land and society. Graduates will have developed a multi-disciplinary appreciation of the theory and methods for understanding the interaction of people, societies and their physical environments, and will have gained skills in applying that theory to significant 'real world' problems. High achieving graduates will be equipped to continue to postgraduate study in at least one area of special interest.

Career outcomes

Career opportunities for graduates of this programme exist in both local and central government roles, from planning to policy development, advice and analysis; regional plan construction and implementation; data analysis, interpretation and communication; Te Tiriti o Waitangi engagement, partnership and compliance; and water management, or some combination of any or all of these.

Opportunities exist in the private sector within resource planning, allocation, use and sustainability; land use and change and societal changes and dynamics.

BACHELOR OF ENVIRONMENT AND SOCIETY



Māori and Indigenous Environmental Management

The Māori and Indigenous Environmental Management major is founded on the notion that Māori and other indigenous communities, have a unique association with their traditional places, environments and resources. These associations bring with them customary knowledge, concepts and approaches and a cultural framework for engaging with the environment which continue to be used to manage interactions. However, modern-day communities are being forced to rethink their interactions with the natural world in the increasingly complex political and economic context of nation states and globalisation.

A graduate of this major will have examined these challenges, investigated how Māori and indigenous communities are responding to them, and be equipped with the knowledge and skills to engage confidently, professionally and (in a cultural sense) competently with these communities. Graduates will have the conceptual frameworks and applied skills needed to manage and advocate across a myriad of environmental and related social, political and economic issues.





Career outcomes:

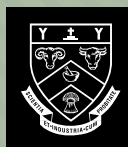
Graduates of the Māori and Indigenous Environmental Management major will be well-placed to engage with the Māori economic and cultural sector, which was measured at over NZ\$40 billion last year, and is one of the country's fastest growing economies. Graduates will find employment working for and working with the 15% of NZ farmers who are Māori, the Māori-owned tourism sector and with post-settlement iwi authorities, rūnanga offices and Māori-owned commercial operations.

As our world changes, we need highly skilled individuals who can tackle the big issues.

>> PROGRAMME CONTACTS



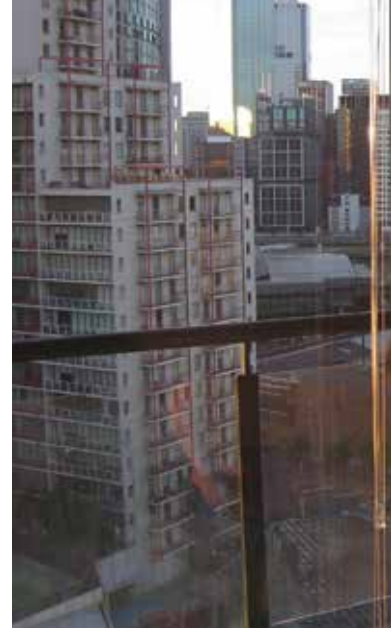
**LAND AND SOCIETY +
MĀORI AND INDIGENOUS
ENVIRONMENTAL MANAGEMENT**
Lloyd Carpenter
Senior Lecturer
E: lloyd.carpenter@lincoln.ac.nz
P: 03 423 0503



STUDENT LIAISON TEAM
E: land@lincoln.ac.nz
P: 0800 10 60 10
03 423 0000

BACHELOR OF Land and Property Management

www.lincoln.ac.nz/BLPM



DURATION:

4

Years

TAUGHT AT:



Te Waihora campus
(Lincoln, Canterbury)

INTAKE:

Semester Semester

1

2



Lincoln University's Bachelor of Land and Property Management (BLPM) is the most comprehensive property-focused degree in Australasia. It gives students the option to study an urban or rural specialisation, or both – or to combine property studies with an additional area of focus such as accounting, finance, investment, planning, environmental management, geomatics or marketing. We call this 'property plus'. There is also the possibility of spending a semester or two at a university overseas.

This unique programme provides graduates with a well-rounded knowledge-base upon which to begin any property career, whether in New Zealand or internationally. The BLPM degree maintains the long established accreditation of Lincoln University property courses with national professional bodies such as The Property Institute of New Zealand, the Valuers Registration Board, the Institute of Valuers, and the Real Estate Agents Authority.

The degree also adds an international dimension by being fully accredited with the Royal Institution of Chartered Surveyors via a university partnership agreement. This means BLPM graduates can now qualify to become Chartered Surveyors as well as the more traditional roles as Registered Valuers and Registered Property Managers.

Entry requirements:

- University Entrance through NCEA, or an approved equivalent qualification.
- If English is not your first language other entry requirements will apply.

Refer to www.lincoln.ac.nz for more information.

Recommended preparation:

Geography, Economics, English and Mathematics are all useful preparation but not essential.



Programme structure:

- Pass at least 480 credits (32 courses)
- Pass all compulsory courses
- Complete no more than 210 credits (14 courses) at 100-level
- Complete at least 150 credits (10 courses) at 300-level
- Complete the requirements of either the Urban or Rural specialisation
- Complete the practical work component.

Practical work:

Urban specialisation

12 weeks in the following areas:

- Valuation
- Property Management
- Real Estate
- Construction – a maximum of 6 weeks only.

Rural specialisation

12 weeks in the following areas:

- Valuation
- Property Management
- Real Estate
- Construction – a maximum of 6 weeks only.

Plus 26 weeks on-farm practical work on two different farm types.



BACHELOR OF LAND AND PROPERTY MANAGEMENT

(continued)



Accreditations:

Royal Institution of Chartered Surveyors (RICS); The Property Institute of New Zealand; The New Zealand Institute of Valuers; and The Valuers Registration Board.

Career outcomes:

Property provides the foundation and resources for virtually every part of our daily lives, from where we live to where we work, socialise, learn, and play. It contributes enormously to worldwide economies as a valuable asset base and a foundation for production requiring development, maintenance and renewal.

Graduates of the urban property specialisation are prepared for a very wide range of careers including: valuation, property, facilities and asset management, property development, investment and portfolio analysis, real estate brokerage and banking and finance, to name just a few.

Careers with a rural property specialisation include farm and other rural property management, rural banking and finance, valuation, and property development. Careers with an agricultural focus will include farm consultancy and rural valuation, or these pursuits can be uniquely combined: for example, agribusiness consultancy and valuation is a popular and highly valued pathway.

Programme content

Urban specialisation

Content can include topics such as:

- Land, People and Economies
- Research and Analytical Skills
- Transforming Data into Information
- Financial Information for Business
- Economies and Markets
- Introduction to Commercial Law
- Computing Fundamentals
- Building Construction
- Introduction to Property
- Sustainable Futures
- Land Economics
- Buildings Facilities Management
- Financial Management
- Property Law
- Principles of Urban Property Management
- Real Estate Marketing and Management
- Principles of Valuation
- Resource Management Law
- Property Analytical Methods
- Property Investment and Portfolio Analysis
- The Valuation of Investment Property
- Urban Valuation
- Property and Facilities Management
- Property Development.



FACT

\$428 billion
NZ PROPERTY ASSETS

Programme content

Rural specialisation

Content can include topics such as:

- Land, People and Economies
- Research and Analytical Skills
- Transforming Data into Information
- Financial Information for Business
- Economies and Markets
- Introduction to Commercial Law
- Building Construction
- Primary Industry Systems
- Plant Science
- Soil Science
- Introduction to Property
- Sustainable Futures
- Land Economics
- Financial Management
- Property Law
- Real Estate Marketing and Management
- Principles of Rural Valuation
- Principles of Farm Management
- Horticultural Systems
- Farm Management Analysis
- Horticultural Management Analysis
- Resource Management Law
- Farm Management Analysis and Planning
- Farm Development and Investment
- New Venture Planning in Primary Production
- Property Analytical Methods
- Property Investment and Portfolio Analysis
- The Valuation of Investment Property
- Rural Valuation.

>> PROGRAMME CONTACTS



John McDonagh

Course Advisor (Urban)

Associate Professor

E: john.mcdonagh@lincoln.ac.nz

P: 03 423 0204



Gary Garner

Course Advisor (Rural)

Senior Lecturer

E: gary.garner@lincoln.ac.nz

P: 03 423 0274

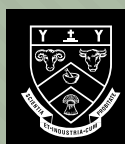


Barbara Nicholson

Practical Work Coordinator

E: practicalwork@lincoln.ac.nz

P: 03 423 0061



STUDENT LIAISON TEAM

E: land@lincoln.ac.nz

P: 0800 10 60 10

03 423 0000

BACHELOR OF Science

www.lincoln.ac.nz/BSc



DURATION:

3

Years

TAUGHT AT:



Te Waihora campus
(Lincoln, Canterbury)

INTAKE:

Semester Semester

1

2



As our world changes, we need highly skilled individuals who can tackle the big issues. How do we feed the world while minimising environmental impact? How do we protect our environment from biological threats? How do we maintain good environmental quality? These are the pressing questions facing scientists of the future. As a Lincoln University Bachelor of Science (BSc) graduate, you can help answer them.

Lincoln University's Bachelor of Science programme is applied and context-based designed to produce graduates who have a firm grounding in the basic sciences. These can be applied to processes in the environment, in ecosystems or at the molecular level. This will contribute to sustainable management and conservation of land, water and air and the country's abundant natural resources.

The BSc has seven majors: Agritech, Bioprotection and Biosecurity, Conservation and Ecology, Food Science, Individual, Land, Water, Environment and Māori and Indigenous Knowledge of the Environment.

Entry requirements:

- University Entrance through NCEA, or an approved equivalent qualification.
- If English is not your first language other entry requirements will apply.

Refer to www.lincoln.ac.nz for more information.



Recommended preparation:

A good grounding in the science subjects from school: Chemistry, Physics, Biology, Mathematics/Statistics. Computing is a useful option too.

Programme structure:

- Pass at least 360 credits (24 courses)
- Pass all compulsory courses
- Complete no more than 165 credits (11 courses) at 100-level
- Complete at least 75 credits (5 courses) at 300-level
- Meet the requirements of at least one of the named Bachelor of Science majors.



BACHELOR OF SCIENCE

(continued)



Māori and Indigenous Knowledge of the Environment major

Lincoln University's Māori and Indigenous Knowledge of the Environment major examines the foundation of science and Māori and Indigenous people's knowledge frameworks. Students will explore the associated values and processes, comparing and contrasting their application to natural resource management and development.

This major facilitates fostering a better understanding and relevance of the Treaty of Waitangi, tikanga and kawa Māori, and kaupapa Māori approaches.

Graduates of this major will have a philosophical understanding of indigenous knowledge and an appreciation of the cultural-political landscape as contextual drivers for the application of science.

Career outcomes

Graduates of the Māori and Indigenous major will be well-placed to engage with the Māori economic and cultural sector, which was measured at over NZ\$40 billion last year, and is one of the country's fastest growing economies. Graduates can expect to find employment working for and working with the 15% of NZ farmers who are Māori, the Māori-owned tourism sector and with post-settlement iwi authorities, runanga offices and Māori-owned commercial operations.

They would be expected to find employment opportunities with New Zealand science providers, eg Crown Research Institutes and universities, Māori entities like iwi organisations, large incorporations and trusts with development and environment agendas. Career prospects also exist within local and regional governmental, and Central Government organisations and agencies who have a range of legislative and Treaty of Waitangi obligations; the land-based primary production sector; environmental consulting organisations; educational providers in the primary, secondary and tertiary sectors. Furthermore, pathways exist for postgraduate study and research is also an option for qualifying students.



“

Lincoln is right at the cutting edge in this new era of research. Studying at Lincoln meant I could be part of that exciting research initiative.

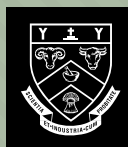
”

>> PROGRAMME CONTACTS



MĀORI AND INDIGENOUS KNOWLEDGE OF THE ENVIRONMENT

Jamie Ataria
Senior Lecturer
E: jamie.ataria@lincoln.ac.nz
P: 03 423 0729



STUDENT LIAISON TEAM

E: land@lincoln.ac.nz
P: 0800 10 60 10
03 423 0000

BACHELOR OF Sport and Recreation Management

www.lincoln.ac.nz/BSRM

DURATION:

3

Years

TAUGHT AT:



Te Waihora campus
(Lincoln, Canterbury)

INTAKE:

Semester Semester

1

2



Lincoln University's Bachelor of Sport and Recreation Management (BSRM) degree, developed with the assistance of employers, recognises the need for graduates to possess applied skills in sport and recreation management, together with skills in critical thinking and demonstrated academic competency.

Students will take core courses that provide a broad understanding of sport and recreation theory and practice, event planning and recreation policy. There are also Lincoln's core university-wide courses through which students put their learning in the wider context of the land-based sectors, land use, communities and economies. In addition, students can choose electives to complement the degree. Lincoln has established a track record for meeting the demands of many professional, industrial and employer agencies working in sport and recreation management.

Entry requirements:

- University Entrance through NCEA, or an approved equivalent qualification.
- If English is not your first language other entry requirements will apply.

Refer to www.lincoln.ac.nz for more information.

Recommended preparation:

Any of the following subject would be useful but not essential: Computing, Economics, Geography, Social Science, History, Maths, PE, and Tourism.

Programme structure:

- Pass at least 360 credits (24 courses)
- Pass all compulsory courses
- Complete no more than 165 credits (11 courses) at 100-level
- Complete at least 75 credits (5 courses) at 300-level.

Practical work:

- 120 hours in total within relevant industry settings associated with sport and recreation management.



Career outcomes:

There is a range of opportunities for our graduates in the sport and recreation sectors, for example, sport and recreation coordinators, event managers, sport development officers, recreation advisors, community sport organisers, park rangers, outdoor education leaders and sport management consultants.

Programme content

Content can include topics such as:

- Land, People and Economies
- Research and Analytical Skills
- Concepts in Sport and Recreation
- Professional Studies in Sport and Recreation Management
- Society, Culture and Environment
- Introduction to New Zealand Government and Public Policy
- Sustainable Futures
- Motivation and Participation
- Event Planning
- Recreation, Sport and Adventure in Outdoor Environments
- Principles of Physical Activity, Exercise and Health
- Research Methods
- Sport and Society
- Sport and Recreation Management.

>> PROGRAMME CONTACTS



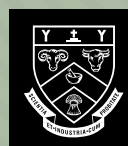
Koji Kobayashi

Course Advisor

Lecturer

E: koji.kobayashi@lincoln.ac.nz

P: 03 423 0490



STUDENT LIAISON TEAM

E: land@lincoln.ac.nz

P: 0800 10 60 10

03 423 0000

BACHELOR OF Tourism Management

www.lincoln.ac.nz/BTM



DURATION:

3

Years

TAUGHT AT:



Te Waihora campus
(Lincoln, Canterbury)

INTAKE:

Semester Semester

1

2



Lincoln University's Bachelor of Tourism Management is part of an internationally established programme of study that has been taught at Lincoln for more than 20 years.

Tourism (domestic and international) is one of New Zealand's and the world's most rapidly growing industries and there is an increasing demand for university graduates who have a specialised understanding of the requirements of this diverse and exciting sector.

The Bachelor of Tourism Management is a specialised programme which provides students with skills and knowledge of the characteristics and management of the tourism sector. The programme focuses on tourism in relation to people and places as well as businesses and has been designed in consultation with industry.

Completing your Lincoln University programme specialising in tourism management means you'll have a qualification with strong theoretical and applied learning that gives a broad understanding of the industry at all levels, and trains you for positions of responsibility and management.

Entry requirements:

- University Entrance through NCEA, or an approved equivalent qualification.
- If English is not your first language other entry requirements will apply.

Refer to www.lincoln.ac.nz for more information.

Recommended preparation:

Any of the following subjects would be useful but not essential: Computing, Economics, Geography, Mathematics, and Tourism.

Programme structure:

- Pass at least 360 credits (24 courses)
- Complete all compulsory courses
- Complete no more than 165 credits (11 courses) at 100-level
- Complete at least 75 credits (5 courses) at 300-level.



Tourism = 15%
OF NZ'S TOTAL EXPORT EARNINGS

Career outcomes:

The Bachelor of Tourism Management equips students with the knowledge and skills to take on a multitude of managerial, planning, business leadership, advisory or research roles within the industry. Career opportunities in tourism-related industries include: hospitality and hotel management, transport, tourism operations, attractions and activities, conservation and environmental management, ecotourism and agritourism.

A qualification in tourism management also provides students with highly transferable skills which can be applied within a range of private and public sector roles. Private sector opportunities include: tourism/destination marketing, event management, tourism consultancy, and human resource advisors. Public sector roles at the national, regional and local levels include: policy analyst, researcher, market analyst, destination planning/management, and tourism product development.

Programme content

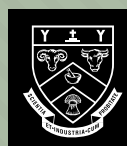
Content can include topics such as:

- Land, People and Economies
- Research and Analytical Skills
- Society, Culture and Environment
- Introduction to New Zealand Government and Public Policy
- Introduction to Tourism
- The Global Business Environment
- Economies and Markets
- Sustainable Futures
- Tourism Systems
- Tourist Behaviour
- Research Methods
- Recreation and Tourism in Protected Natural Areas.

>> PROGRAMME CONTACTS



Michael Shone
Course Advisor
Lecturer/Academic Coordinator for
Bachelor of Tourism Management
E: michael.shone@lincoln.ac.nz
P: 03 423 0497



STUDENT LIAISON TEAM
E: land@lincoln.ac.nz
P: 0800 10 60 10
03 423 0000





**Where are
Lincoln
University
graduates?**





TAMMY MEHRTENS

*Bachelor of Sport and Recreation Management
Community Sports Advisor, Sport Canterbury*

Tammy Mehtens was able to turn her love of sport and fitness into her dream career by studying at Lincoln University. “I have always played sports and had an interest in health and fitness – and the university has such a great reputation in the industry.”

Tammy says she particularly enjoyed the practical, hands-on aspect of the programme. “I loved getting out there – running events, volunteering for organisations and meeting people who you would ideally be working with in the industry. Having those contacts is really important and is one of the reasons I landed this position. I love my job and I really enjoy this industry.”

As community sports advisor, Tammy works alongside clubs and schools, helping to deliver and promote appropriate sport opportunities. “My time at Lincoln was very positive – I learned so much and discovered opportunities for my future. I met a lot of great people and had access to fantastic lecturers and support staff.”



JENN HALLIDAY

*Bachelor of Sport and Recreation Management
Sports Management Consultant, Matter of Sport*

Jenn Halliday received a Bachelor of Sport and Recreation Management from Lincoln University in 2013 and now works as a sports management consultant.

Originally from Vancouver in Canada, she searched for recreation programmes at universities all over the world before settling on Lincoln. “I was so delighted to find a course near Christchurch,” she says. “I had spent time there when the February earthquake hit, and I fell in love with the people and the city.”

Jenn says the Lincoln course was perfect, as she wanted a degree that would lead her into managing sport and recreation, rather than delivering it. “There were some good programmes around the world, but Lincoln had an excellent international reputation and I knew its small size would mean I was seen as a student, not a number. The programme had all of the components I was looking for and it’s beautiful in Christchurch!”

Jenn says the lecturers were passionate about the industry and willing to discuss a variety of topics outside of class. “This is the benefit of a small university. I can ask a lecturer out for a coffee and have a profound and engaging conversation that goes beyond the classroom curriculum.

“Informal mentoring is natural for the lecturers at Lincoln, because they care about their students so much.”



CARL FRAUENSTEIN

Bachelor of Recreation Management (Sport and Tourism)

Cricket Operations Co-ordinator, New Zealand Cricket

Carl Frauenstein, who attended Lincoln University on a cricket scholarship, graduated with a Bachelor of Recreation Management (Sport and Tourism) in 2007. He is now the Cricket Operations Co-ordinator for New Zealand Cricket, based at the High Performance Centre at Lincoln University. His role involves arranging and delivering the National Tournaments that are held at Lincoln and organising the women's international tours to New Zealand.

"The most valuable aspect of my study at Lincoln was developing a diligent work ethic that has been carried through to my professional career," he says. "Being renowned as an agriculturally-based university, Lincoln has done really well at developing a variety of other courses to attract a diverse range of students. The courses I studied more than covered my sports management interests and also helped me to develop a knowledge of other industries, especially tourism."

He rates his lecturers as extremely knowledgeable and helpful and says the fact that they were very approachable outside of lecture times made his studies easier.



BLAIR MINTON

Bachelor of Sport and Recreation Management

Upper South Relationship Manager, GymSports NZ

Blair Minton attended Lincoln University to study for a Bachelor of Sport and Recreation Management. He graduated in 2013 and now works as the Upper South Relationship Manager for the National Sports Organisation, GymSports NZ.

During his studies at Lincoln, he particularly appreciated the lectures that explored the organisational structure of sports organisations. He also enjoyed the internships, which he says offered valuable vocational experience. "The classes gave me an insight into the industry structure and the practical course work enabled me to experience this. The internships gave me a chance to get my name known amongst key people, which eventually contributed to me getting my first industry job."

Blair says his lecturers all had a passion for the sector and many drew on real life experiences. "The small size of the classes was a huge bonus as well. It meant you actually knew your fellow students and got to connect with your lecturers."

Blair also appreciated the facilities available on campus. "As a student who travelled out to Lincoln each day from the east side of Christchurch, it was important that once out at the University, I had access to everything I might need. The range of study and food areas was excellent and I loved having access to the Rec Centre facilities."



ELIZABETH PITCORN

Bachelor of Tourism Management
*Marketing and Promotions Consultant,
 Cirrus International Marketing and Promotions*

Elizabeth graduated with a Bachelor of Tourism Management and is now the Marketing and Promotions Consultant at Cirrus International – a tourism, marketing and event management organisation she co-founded.

Cirrus contracts to a number of organisations, including Selwyn District Council, and Elizabeth works with tourism operators, travel agents, local tourism organisations and community groups, promoting Selwyn District to a range of visitors.

“I wouldn’t be where I am today if it wasn’t for Lincoln University. I knew I wanted to be involved in the tourism industry, but the degree programme I mapped out also gave me the opportunity to specialise in marketing, which I could use in any industry.

“The way the degree was structured gave me the opportunity to work in the real world and interact in the industry – it’s not just textbooks at Lincoln.”

KATE MCLAUGHLIN

Bachelor of Sport and Recreation Management
*Conference and Professional Development
 Organiser, Lincoln University*

Sports-mad Lincoln graduate Kate McLaughlin grew up on a sheep and beef farm 40 minutes south of Te Awamutu.

She attended Lincoln on a netball scholarship and completed a degree in Sport and Recreation Management in 2013.

“All through high school, I played a variety of sports and loved it, so I knew that whatever I studied, it had to relate to sport,” she says.

“My careers advisor recommended that I attend Lincoln due to my farming background and sporting interests and it gave me a great chance to explore the South Island. The smaller size of the university was also a plus.”

Kate enjoyed studying with like-minded people who shared her love of sport and thrived in Lincoln’s small, friendly community.

“The class sizes were great, as it meant I got to know my classmates and lecturers really well,” she says.

Kate was so taken with the Lincoln community, she has returned to campus as an employee, working in the University’s Conference and Professional Development Team.

“I started my job in September 2014 and have never looked back.

“I get a great mix of events to organise and it easily allows me to play numerous sports. I couldn’t be happier,” she says.



Employment opportunities

www.lincoln.ac.nz

CAREERS IN SOCIETY, TOURISM AND SPORT



» Graduates of Lincoln University find employment throughout New Zealand and the world, in both the rural sector and urban centres, within a wide range of commercial, government, research and private enterprises.

With a qualification in a society, tourism or sport-related field you could find yourself working anywhere from sports clubs to heritage sites, theme parks, hotels and cruise liners, national parks, government departments, research, small firms or multinationals. Opportunities are typically customer facing and can be categorised into:

Sport/Recreation: sport and recreation centre management (gyms, spas, sports clubs), coaching and performance analysis, sports development, sports event management and disability sport, community programme development, facilities management/operations, and outdoor activities/education.

Property: graduates work in both rural and urban enterprises, in advisory or consultant roles, as valuers, surveyors, real estate or development, as well as in a range of other property-related roles.

Tourism: travel and tourism (travel agencies, tour operators, adventure tourism), passenger services (air, sea, rail and road), tourism planning, impact assessment, advisory roles and local government.

Society/Leisure: leisure and entertainment (cinemas and theme parks), culture and heritage (visitor attractions, national parks), lwi industry, betting and gambling (casinos and horse racing).

The majority of large organisations in these sectors also recruit graduates into commercial functions such as finance, IT, sales and marketing, and general management so you won't lack opportunities to put your degree to good use or combine it with learning other skills.

There are so many more roles and varied opportunities available in this sector: sports/tourism administrator, sports development, sports coach, outdoor activities/education manager, tour manager, information/visitor centre advisor, health promoter, personal trainer, park ranger, social scientist, policy advisor, research assistant.

Lincoln University has a Careers and Employment office that can provide you with support and guidance as you navigate your way through your career choices.

To find out more about the opportunities in society, tourism or sport careers contact:
michelle.ash@lincoln.ac.nz

Planning your study and applying

www.lincoln.ac.nz

You can apply online using our MyLinc system through the University website, but before you do make sure you have done a bit of homework.



Take some time to decide what level of study best suits you and your abilities and aspirations, as well as to better understand how study is structured at Lincoln University.

There are a lot of options and study levels progress from level 4 to level 10. Most of our undergraduate bachelor's degree students start directly into the first year of their degree – but if you feel you need to upgrade your academic skills, your English language skills, or want a one-year course to lead straight into a particular career, Lincoln University has those bases covered.

There are many pathways to a bachelor's degree. After successfully completing three years and gaining the undergraduate degree you could go on to postgraduate study if you want to gain more knowledge and become more specialised.

To find out more visit www.lincoln.ac.nz or see our Certificates and Diplomas or Undergraduate prospectuses.

How to apply

- 1** Decide on your programme
- 2** Apply – click on the Apply Now button on our website or complete your application in **mylinc.nz**

We will assess your application and contact you with an offer if you are successful.
- 3** Accept your offer through our online system, mylinc
- 4** Enrol in the individual courses that will make up your qualification programme. Enrolment opens 1 October each year. Enrolment can only take place once an offer of placement has been made and accepted.

Student Liaison team

Our Student Liaison team will be the first point of contact for you as a future student. They can provide you with any information you need, and answer any questions you may have about course planning, applying or life at Lincoln University. The Student Liaison team also visits secondary schools and attends career expos in all regions.



Jaime Thomson
Student Liaison Manager

Jaime leads the Liaison team and is the key contact for schools in Southland, South Canterbury (including Oamaru), and Christchurch.



Suzanne Jamieson
Student Liaison Officer

Suzanne is the key contact for Auckland, Waikato and Northland.



Ekara Lewis
Māori Outreach Coordinator

Ekara is the key contact for schools in Gisborne and is available to provide support and advice for all future and current Māori students.



Anna Soboleva
Recruitment Officer, International

Anna is the key contact for international students already studying in New Zealand who would like to study at Lincoln University.



Sophie Prangnell
Senior Student Liaison Officer

Sophie is the key contact for schools in Hawke's Bay, Wellington, Wairarapa, Christchurch and Australia.



Suzanne Carruth
Student Liaison Officer

Suzanne is located at our Telford campus, and covers the North Island and the lower South Island.



Kimberley Forbes
Student Liaison Officer

Kimberley is the key contact for Otago, Nelson/Marlborough, Wanganui, Manawatu and Christchurch.



Te Waihora (Lincoln) campus contacts

Freephone: 0800 10 60 10
(within New Zealand)

Phone: +64 3 423 0000
(international)

Email: land@lincoln.ac.nz



James Agnew
Student Liaison Officer

James is the key contact for Bay of Plenty/Coromandel, the Central Plateau (North Island), Taranaki, Westland and Christchurch.



Telford (Balclutha) campus contacts

Freephone: 0800 83 53 67
(within New Zealand)

Phone: +64 3 419 0300
(international)

Email: enquiry@telford.ac.nz

WHO CARES ABOUT THE Environment

» We do!

Key to all that Lincoln University does is an **awareness of the environment** – from our course content, to our native plantings, to the paper this publication is printed on.

As New Zealand's specialist land-based university, our mission is to transform land, people and economies, and we aspire to do this without negatively impacting our environment.

Land is something we value. It is, literally, our world.

In 1993 the University adopted an **Environmental Charter and an Environmental Policy** (the first among New Zealand tertiary establishments) to support the work of the already established staff-student group called Lincoln Environmental Organisation (LEO). This led to the formation of a formal Environmental Task Force and the revision of the Policy in 2003 and 2010 – giving the University what it now has: the **Sustainability Advisory Group for the Environment** (SAGE). SAGE works alongside LEO to ensure the University 'treads lightly on the Earth', ensuring we live up to our values in the areas of sustainable practices, stewardship of our own environment, and protection of the wider environment.

The University's School of Landscape Architecture building was built with **locally sourced materials** with a life span of over 100 years and which require minimal maintenance. In this building and across campus, the University continues to make a difference with significant efforts in **energy conservation, water management, resource recovery and waste management**.

Lincoln University is a major supporter of the **Lincoln Envirotown Trust** and provides office space and resources for the Chair of the Trust.

All our publications are printed on **environmentally responsible paper**, produced using Elemental Chlorine Free (ECF), Third Party Certified pulp sourced from well managed and legally harvested forests, and manufactured under the strict ISO14001 Environmental Management System.

New Zealand's native biodiversity makes this country unique and Lincoln University is very proud of our **park-like campus, gardens and the native plantings** we have both on campus and extensively at the Lincoln University Dairy Farm.

The Māori outreach programme and the work of staff across the University aims to facilitate an understanding of, and acknowledges **Māori communities, iwi, hapu, whanau and their affinity with their whenua and their environments**. Formal partnerships and informal collaboration will ensure a continuing mutual understanding and respect for the land, consistent with the concept of kaitiakitanga (stewardship).



Disclaimer

Every effort is made to ensure that information in this publication is correct at the time of printing, but the content may be subject to change. Lincoln University reserves the right to make changes, amendments or deletions – including the withdrawal of courses - should circumstances change.

Lincoln University does not assume, and hereby disclaims, any express or implied liability whatsoever to any party for any loss or damage caused by errors or omissions, whether these errors or omissions result from negligence, accident or any other cause.

BE PART OF THE GENERATION THAT WILL
MAKE A CHANGE. STUDY AT LINCOLN.



www.lincoln.ac.nz

0800 10 60 10 in New Zealand

+64 3 423 0000 international



ADDITIONAL INFORMATION

We have range of other publications
and resources available for your
reference, visit

www.lincoln.ac.nz/brochures.

The information in
this publication is
covered by Creative
Commons Licience



**Lincoln
University**
Te Whare Wānaka o Aoraki

AOTEAROA • NEW ZEALAND

New Zealand's specialist
land-based university